

WEST PLAINS IPM UPDATE

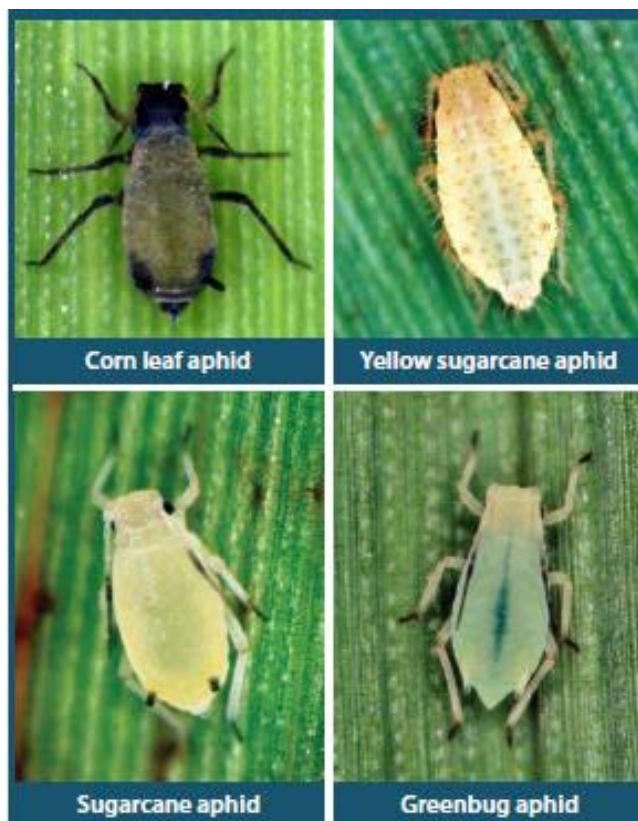
News about
Integrated Pest
Management in
Hockley,
Cochran, and
Lamb Counties
from
Kerry Siders

June 26, 2017

Vol. 22 – No.
Special

Sugarcane Aphids in Lubbock County

Sugarcane aphids (SCA) have been confirmed in grain sorghum in southern Lubbock County by IPM Agent, Dr. Katelyn Kesheimer. This makes this the farthest north in Texas that the aphids have been found in 2017. Only small colonies have been found so far, but now is the time to intensify scouting efforts and/or be prepared for those sorghum acres you are currently planting behind failed cotton. Yellow sugarcane aphids (YSCA) have also been found this year, and at extremely low numbers. It's important to note the difference between the aphid species, as management strategies differ.



Texas High Plains Entomologists have put together detailed information on specific thresholds and insecticide choices for the High Plains at the Texas Sugarcane Aphid News blog: <http://txscan.blogspot.com/2017/06/preparing-for-sugarcane-aphid-part-ii.html> Please call if you have questions. KS

See You On The Radio



Wednesdays from 1:00 to 2:15 pm. 950 AM

Wednesdays from 7:30 am to 7:45 am.



West Plains IPM Update is a publication of the Texas A&M AgriLife Extension Service IPM Program in Hockley, Cochran, and Lamb Counties.

Editor: Kerry Siders, Extension Agent-IPM
Contact information: 1212 Houston St., Suite 2 Levelland, TX 79336
(806) 894-3150 (office),
638-5635 (mobile), or 897-3104 (Fax)
ksiders@tamu.edu (E-mail),



Partners with Nature

Educational programs of the Texas A&M AgriLife Extension Service are open to all people without regard to race, color, religion, sex, national origin, age, disability, genetic information or veteran status. The information given herein is for educational purposes only. References to commercial products or trade names is made with the understanding that no discrimination is intended and no endorsement by Texas A&M AgriLife Extension is implied.

The Texas A&M System, U.S. Department of Agriculture, and the Commissioners Courts of Texas Cooperating