

*Texas A&M AgriLife Extension is an equal opportunity employer and program provider.
The Texas A&M University System, U.S. Department of Agriculture, and the County Commissioners Courts of
Texas Cooperating*

**On-line Cochran 4-H
Newsletter can be found at
Web-site: <http://cochran-tx.tamu.edu>**

**November-December 2016
Vol. 7**

Page 1

- *Upcoming/Event information*
- *Club Meeting Dates*
- *Awards & Results*

Page 2-3

- *Manager/Volunteer Info.*
- *TAES Non-Discrimination Policy/Youth Protection Standard*
- *4-H Center Web-site info.*
- *County Web-page Info.*
- *D-2 & Area Programming*
- *Stock Show Tips*

Page 4

- *2015 4-H Calendar*
- *Texas 4-H Enrollment Fee*
- *Reminders & Suggestions*

Event & Program Information Dates

New enrollment is \$25 or re-enrollment fee, now, is \$20, 4-H Connect: <http://tx4-tamu.edu/4hconnect/index.html> Re-enrollment began August 15th Youth re-enrollment fee will return to \$25 after October 31st. Adult volunteer fee is \$5.00.

District Food Show November 12th

All Major and county stock show registrations due November 9th

Heifer validation for 2016 due November 15th

Gold Star November 21st

D-2 Fall Roundup December 3rd

Sandhills Stock

show: <http://www.sandhillsstockshowandrodeo.com/schedule.html> - January 4th-14th, 2017 deadline November 9th

Cochran County Stock Show - January 11-14th, 2017 Deadline November 9th

Jan 11th 3:30- 5:00 goat & lamb weigh in. Jan 12th 2 p.m. swine weigh-in. & Rabbit weigh in 4p.m. Jan 12th

6 p.m. goat & lamb show. Jan 12th 9 a.m. swine show. Jan 13th 11 a.m. steer weigh in. Jan 13th 1 p.m. Rabbit

Show Jan 13th 3 p.m. heifer & steer show to follow. Jan 14th 12 p.m. CCLUA Luncheon. 1:30 p.m. The SALE

Southwestern Exposition and Livestock Show (<http://www.fwssr.com/>) -

Ft. Worth, TX Jan 13th- Feb 4th 2017 Office Deadline November 9th Registration forms will be available after 10/1st due Nov.

San Angelo Stock Show & Rodeo - <http://www.sanangelorodeo.com/>

Feb 3rd- Feb 19th 2017 Deadline November 9th Registration forms not out, yet

San Antonio Stock Show & Rodeo (<http://www.sarodeo.com/>) - San Antonio, TX Feb 9th - Feb 26th 2017 Deadline November 9th Registration forms still not out, yet

Houston Livestock Show & Rodeo - <http://www.rodeohouston.com/>

March 7 - 26th - March 18th Deadline Nov 9th Registration forms not out, yet

Star of Texas - <http://www.rodeoaustin.com/> March 11th- March 25th Deadline Nov 9th Registration forms still not out, yet

Cochran County

TEXAS A&M
AGRI LIFE
EXTENSION



Meeting Dates & Contacts:

Cochran 4-H Club

2nd Tuesday quarterly
starting Sept 2016—
May 2017

Cochran 4-H Gun Club

TBA

Cochran 4-H Adult Leader Association 2016

Contest Results:

Cassidy Besianez West Texas Fair had reserve champion rabbit class 4 with Florida white, Amarillo had Best of breed with Dutch on Friday and best opposite with Dutch and Polish. Saturday best opposite with Dutch and Polish. South Plains Fair had the best of breed Dutch and polish rabbits.



Thank you Cody & Whitney Albus!!



4H Adult Leader & Management Corner:

Equal Opportunity Notification for Educational Programs & Non-Discrimination Policies

Texas A&M AgriLife Extension Service Cochran County does not discriminate on the basis of race, color, national origin, sex, disability, or age in its programs and activities. The following person has been designated to handle inquiries regarding the non-discrimination policies: Requests for accommodation of a disability should be directed to Natalie Silhan, Office Manager, 806-266-5215. Educational programs of the Texas A&M AgriLife Extension Service are open to all people without regard to race, color, sex, disability, religion, age, or national origin.



Need help fundraising.....but,

*"My County doesn't have a TSC store", **no problem.** "Stripes Convenient stores are not located in my County", **no problem.** "Arlington is a bit of a far drive for my county to attend a Texas Rangers Baseball game", **no problem.** Texas 4-H Friends and Alumni hosting 4-H membership drive. Can go to <http://texas4Hfriends.org/alliances> for more information.*

TEXAS 4-H CENTER WEBSITE

While you are surfing the web, don't forget to visit the Texas 4-H Center's website: <http://texas4h-ctr.tamu.edu>

COCHRAN COUNTY 4-H ON-LINE

Now has the 4-H newsletter as well as various other sources of information at: <http://cochran-tx.tamu.edu>

Other 4-H Web-sites

Glory Be Collectibles You might want to check out the neat 4-H items at www.glorybe.com

Clover Corner News Check out the Clover Corner News, 4-H's national online newsletter, at: www.4hblogs.org/ccn.

Check out this Website : <http://texas4-h.tamu.edu>

Tentative D-2 Events

D-2 Food Show November 5th

Gold Star November 21st

D-2 Fall Roundup December 3rd



YOUTH PROTECTION STANDARDS UPDATE

Courtney Dodd, Extension Program Specialist

A reminder at the start of this 4-H year - all volunteers are to be re-screened every three years. For 4-H volunteers, the need for re-screening is determined on a 4-H year basis. For example, a volunteer screened any time between September 1, 2008 and August 31, 2009 needs to be re-screened at the beginning of this 2011-2012 4-H year. More information on volunteer screening is located online at: http://texas4-h.tamu.edu/agents/agent_yps/agents_yps.php

Volunteer \$5 Application Fee Plan

What:

Upon setting up or reactivating their 4-H CONNECT profile each year, adults will be assessed an annual \$5 volunteer application fee.

- This fee will pay for screening, which will continue to be conducted every three years, even though the \$5 volunteer application fee will be assessed annually.

Who:

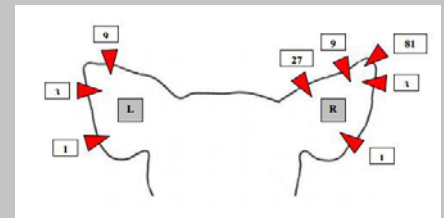
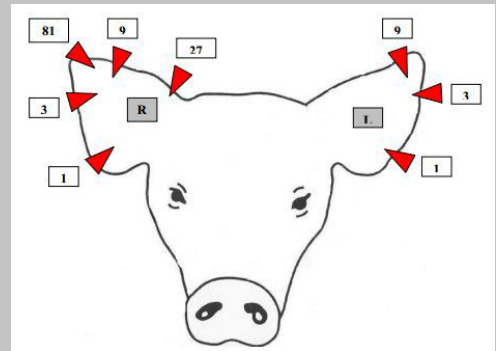
All 4-H volunteers will be assessed the volunteer application fee

Volunteers that provide proof of screening through other entities will still be assessed the fee

Texas A&M AgriLife Extension Service's *Watch UR BAC* program is a free, statewide program to promote alcohol and other drug awareness, the dangers of impaired driving, and friends watching out for friends.

The members of Texas A&M AgriLife will provide equal opportunities in programs and activities, education, and employment to all persons regardless of race, color, sex, religion, national origin, age, disability, genetic information, veteran status, sexual orientation or gender identity and will strive to achieve full and equal employment opportunity throughout Texas A&M AgriLife.

How to read universal show pig's ear notches:





Texas A&M AgriLife Extension Service Cochran County



Calendar 2016-2017:

There's Always Something To Do! Important 4-H Dates

Event & Program Information Dates

New enrollment fee \$25 or re-enrollment fee, now, \$20, 4-H Connect: <http://tx4-tamu.edu/4hconnect/index.html>. Adult enrollment fee \$5.00.

District Food Show November 12th

All Major and county stock show registrations due November 9th

Heifer validation for 2016 due November 15th

Gold Star November 21st

D-2 Fall Roundup December 3rd

2017 Stock Show Lineups:

Sandhills Stock show: <http://www.sandhillsstockshowandrodeo.com/schedule.html> - January 4th-14th, 2017 deadline November 9th

Cochran County Stock Show - January 11-14th, 2017 Deadline November 9th

Jan 11th 3:30- 5:00 goat & lamb weigh in. Jan 12th 2 p.m. swine weigh-in. & Rabbit weigh in 4p.m. Jan 12th

6 p.m. goat & lamb show. Jan 12th 9 a.m. swine show. Jan 13th 11 a.m. steer weigh in. Jan 13th 1 p.m. Rabbit

Show Jan 13th 3 p.m. heifer & steer show to follow. Jan 14th 12 p.m. CCLIA Luncheon. 1:30 p.m. The SALE

Southwestern Exposition and Livestock Show (<http://www.fwssr.com/>) -

Ft. Worth, TX Jan 13th- Feb 4th 2017 Office Deadline November 9th Registration forms will be available after 10/1st due Nov.

San Angelo Stock Show & Rodeo - <http://www.sanangelorodeo.com/>

Feb 3rd- Feb 19th 2017 Deadline November 9th Registration forms not out, yet

San Antonio Stock Show & Rodeo (<http://www.sarodeo.com/>) - San Antonio, TX Feb 9th - Feb 26th 2017 Deadline November 9th Registration forms still not out, yet

Houston Livestock Show & Rodeo - <http://www.rodeo-houston.com/>

March 7- 26th -March 18th Deadline Nov 9th Registration forms not out, yet

Star of Texas - <http://www.rodeo-austin.com/>

March 11th- March 25th Deadline Nov 9th

Cochran County Extension Office

200-B W. Taylor, Morton TX 79346

phone: (806) 266-5215

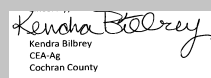
fax: (806)266-0032

email: cochran-tx@tamu.edu

Web-site: <http://cochran-tx.tamu.edu>
Production: Natalie Silhan

Agent:

Kendra Bilbrey, CEA-Ag



Email: Kendra.Bilbrey@ag.tamu.edu

Reminders and/or Suggestions:

August 15th Re-enrollment is required for each new program year. Enrollment or re-enrollment can be completed by going to 4H Connect website located on 4honline.com. Please also remember that all 4-H Volunteer working directly with youth must have also submitted a volunteer screening form. These, also, may be completed online on 4H Connect. **There will be a membership fee of \$20 each for enrollment, or re-enrollment, between Aug 15th—Oct 31st. \$25 each for the same after October 31st. There will be an adult enrollment fee of \$5. Contact office re: any questions you may have. website: <http://tx4-h.tamu.edu/4hconnect/index.html>**

Link for enrollment is: <http://tx4-h.tamu.edu/4hconnect/index.html>

The information given herein is for educational purposes only. References to commercial products or trade names is made with the understanding that no discrimination is intended and no endorsement by the Extension Service is implied. We will seek to provide reasonable accommodations for all persons with disabilities for any of our meetings. We request that you contact Texas A&M AgriLife Extension Cochran County - (806) 266-5215, as soon as possible to advise us of the auxiliary aid or service that you will require.

Texas 4-H homepage, go to: <http://texas4-h.tamu.edu/> for all upcoming event and state 4H info.